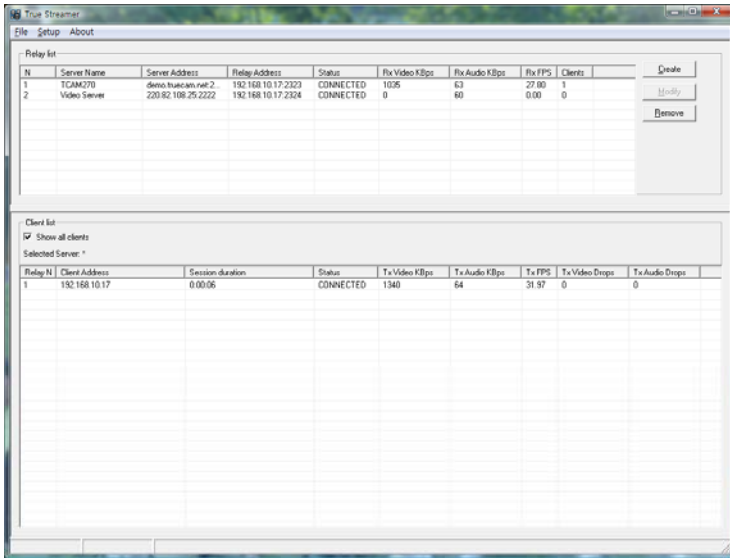
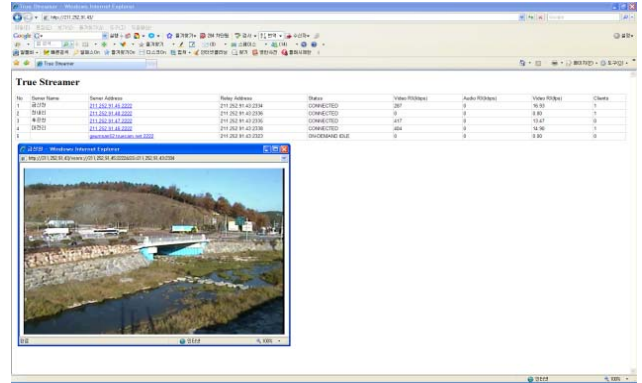


# True Streamer



Streamer Main windows



Access through Web browser

True Streamer is a streaming server which provides users with the relay of real time video and audio data from IP cameras and video servers.

- Max number of input & output channels
  - Input channels: 256
  - Output channels: 1024
  - Actual performance depends on the bit rate of each channel, CPU and network performance of the PC etc.
- Supported video servers cameras
  - Truen products: TCS-200, TCAM-230/250/251, TCAM270 Series
  - Other products: can be supported on demand
- Supported clients
  - True CMS, applications based on Truen SDK, web viewer
- Media & control
  - Video: server to client
  - Audio: bidirectional
  - Event : server to client
  - Control(PTZ/Alarm): client o server
- Monitoring of operating status
  - List of active video servers, bit rate and framerate
  - List of clients connected to each server, with bit rate, framerate and flow statistics
- Two modes of streaming session creation
  - Manual registration
  - On-demand creation by client

# Specification & Design are subject to change without prior notice.